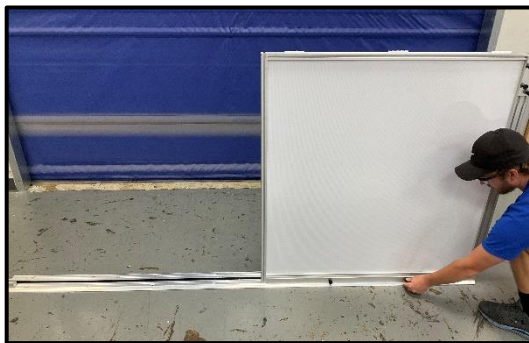


Edge-Guard Sliding Door Assembly Instructions

Step 1.

Place the bottom threshold on a flat floor with the 1" channel piece on inside of your enclosure.



Step 2.

Insert the bottom square section into the channel with the white guide blocks on the top. Screw in 2 of your channel knobs through the slot, securing the square piece to the channel.

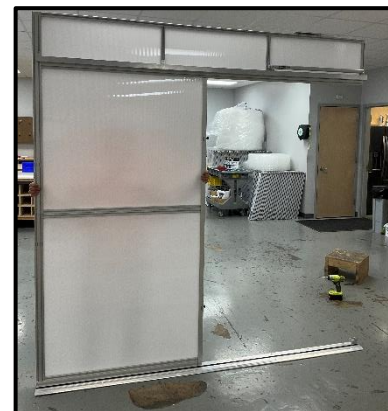


Step 3.

Attach the 78 1/4" Channel to frame in your door way. This piece has 2 slots for attaching channel knobs to the bottom square. The slots are universal for top or bottom.

Step 4.

Place your L shaped frame on top of the already attached bottom square. The closer track should be on the outside of the enclosure, directly above the threshold groove. (See below right) Screw the channel knob into the L Shaped frame. Loosen all 4 knobs on the 6" splice plate already attached to the bottom square, Slide the 6" Splice plate up to where it is split halfway between the 2 sections then tighten knobs.



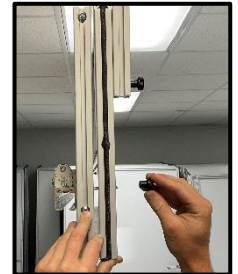
Step 5.

Attach your 91" frame support bar to the open end of the door frame. Secure this piece with 3" Phillips screws (provided for you) into the predrilled holes at the top of the frame. You will also need to use a channel knob to secure the piece at the bottom of the frame (see photo to the right).



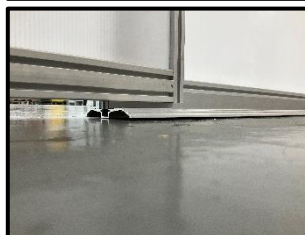
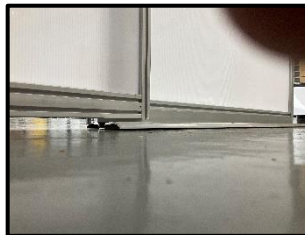
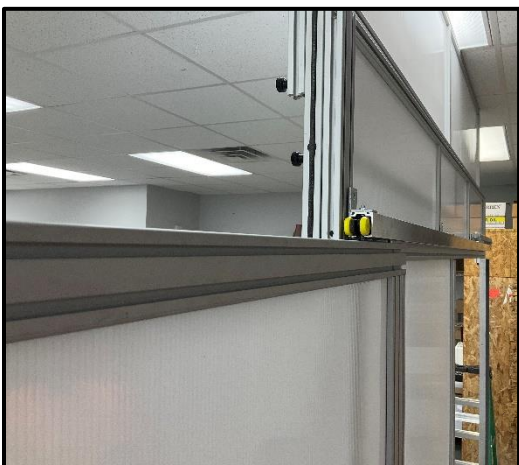
Step 6.

Next you will need to know your ceiling height in order to attach the correct extension panel to the adjustable top with the three provided splice bars. Slide 1 5/8" T-Nuts into the outer edge slot of the 1x2 door frame. Insert T-Nuts through the bottom of the adjustable top's predrilled hole (see **below**) then slide the top to the ceiling. Tighten knobs onto T-Nuts to hold the top in place. Attach grid clips from the top bar of the extension panel to the ceiling to firmly secure the panel in place.



Step 7.

Slide the door onto the track with the door handle plate first. Make sure you get the securing pin and wheels into the track (bottom left picture), as well as the bottom guide cylinders into the groove along the bottom (bottom middle picture). This will only work if your panel frame is vertically plum.





Step 8.

Slide the door until it is fully closed, engaging the closing plunger into the wedge (see left)
Adjust wedge so door is flush against the foam. With the plunger locked into the wedge, slide the keyed handle into the door plate making sure the hanging pin slides into the machined groove of the door handle (see right).



Step 9.

The last step is attaching the closer to the door, for this you will use the Closer bracket and the 2 screws supplied in the bag (3/4" Phillips pan head). You will slide the C shaped gap onto the end of the closer (See Below)

