



EQUIPMENT CATALOG

Dust Control and Containment Items
for Infection Control

2025



678-412-5132

2390 Satellite Blvd. Ste B,
Buford, GA 30518

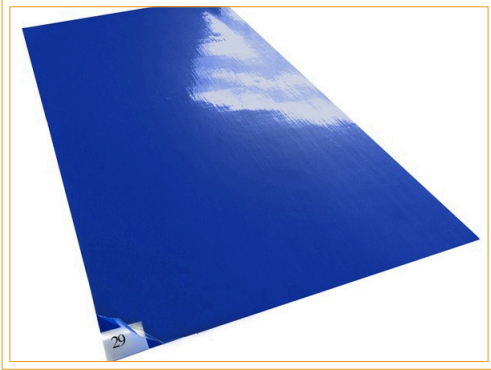


www.icrasolutions.com





STICKY MATS



STICKY MATS

24X36 Blue case of 4 pads SKU: I-24x36_4

\$89.99

36x45 Blue Sticky Mats case of 4 pads SKU:I-36X45

\$130.76

18x36 & 26x45 Available Upon Request



FRAME FOR STICKY MATS

24X36 SKU: I-PFM2638

\$72.00/Frame

36X45 I-36X45frame

\$131.00/Frame

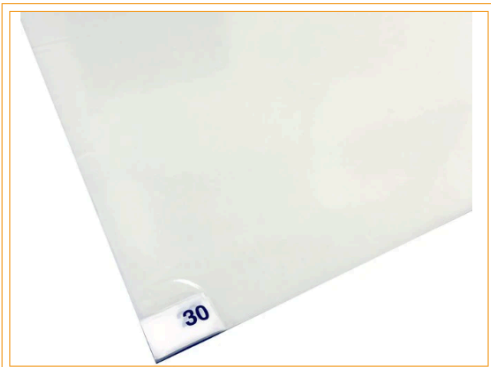


CUSTOM LOGO STICKY MATS

Custom Logo Frames are Reusable with Gripper Padding. The Sticky Mats are clear & lay over the frame.

SKU: I-CustLogoFrame

\$149.99



CLEAR STICKY MATS

The Sticky Mats are clear and lay over the frame. Sticky Mats come 8 pads of 30 mats. Each mat is numbered 1-30.

SKU: I-Clearmats

\$156.00





SMALL TO MEDIUM AIR SCRUBBERS

Typical 8-9 ft. 0-900 sq. ft. for projects w/ 3-6 air changes per hour

To calculate CFM= Room Volume (LXWXH) X 6 ACH (Air Changes Per Hour) / 60 (min in an hour)

To calculate ACH= CFM X 60 (min in an hour) / Room Volume (LXWXH)



OMNIAIRE 600N

200-600 CFM - 2.4 AMPS

Variable Speed **99.99%** HEPA Filter

36 lbs. - 10" inlet/outlet

Flame Retardant Polyethylene Cabinet

SKU: I-OA600N

\$1,095.00



OMNIAIRE 600V MED

150-550 CFM

99.99% HEPA Filtration @.3 Microns

58 lbs.

Variable Speed Unit

SKU: I-OA600V

\$1,199.95



FORCE AIR 700

400-700 CFM - 3.3 AMP

99.97% HEPA Filter

67 lbs. - 10" outlet

Variable Speed

SKU: I-FA700

\$945.00

Call for quantity discounts



NEGATIVE AIR MACHINES

1000-2000 sq. ft. projects w/ 3-6 air changes per hour

To calculate CFM= Room Volume (LXWXH) X 6 ACH (Air Changes Per Hour) / 60 (min in an hour)

To calculate ACH= CFM X 60 (min in an hour) / Room Volume (LXWXH)

Call for quantity discounts



FORCE AIR 2000EC

2 Speed Operation (1975 high - 1000 low CFM)
1.75 HP Motor - 12" Outlet
3-Stage Filtration, Power Supply 115VAC
160 lbs.

SKU: I-FA2000EC

\$1,050.00



OMNIAIRE 2200C

2200C-
2 Speed
2000 high - 1000 low CFM
152 lbs. Galvanized Metal

SKU: I-OA2200C \$1,295 (Particle Board HEPA)

SKU: I-OA2200CMED \$1,395.00 (Metal HEPA 99.99%)



OMNIAIRE 2000V MED

400-1600 CFM
99.99% HEPA Filtration @.3 Microns
Variable Speed Unit
117 lbs.

SKU: I-OA2000V-MED

\$1,415.00



NOVAIR 2000

2 speed configuration (2000 high - 1000 low CFM)
Integrated molded carrying handles
Caster nest for stacking
Integrated rib for strapping

SKU: I-F2100

\$1,295.00



OMNIAIRE 1200PAC

Patient Isolation System w/ 99.99% HEPA Filter
UV-C Germicidal Lights
Variable airflow - 200 - 1100CFM
Exhaust located at top of unit

SKU: I-OA1200PACM-702

\$2,885.00



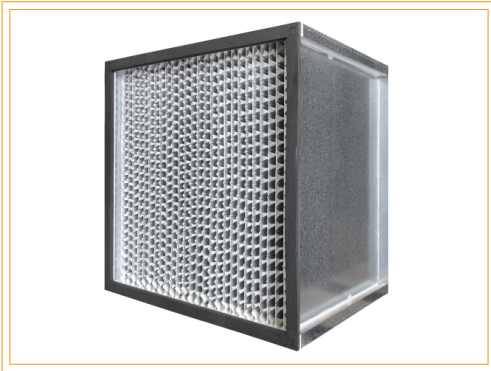
10" MANIFOLDS FOR 1200PAC

Manifold SKU: I-OAIM1200P

\$110.95

Exhaust Manifold SKU: I-OAIM1200PE

\$99.95

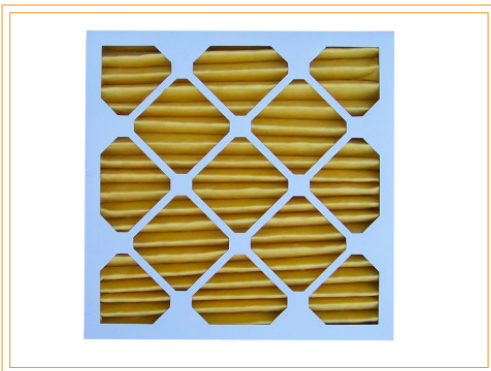


HEPA FILTER

99.99% HEPA Filter @.3 Microns

SKU: I-OAH1616G

\$385

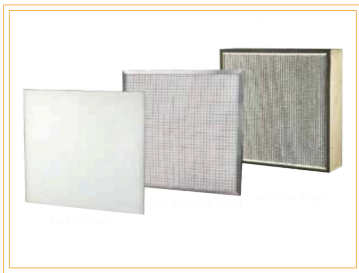


PRIMARY PLEATED FILTER

Pleated Filter for OmniAire 1200PAC
16x16x2 MERV 11
12/cs

SKU: I-OPF1616

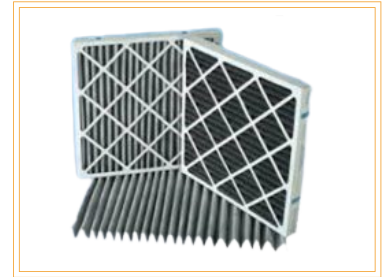
\$89.00



FILTERS

ABATEMENT TECHNOLOGIES PAS2400

- 18X24X1 HOGHAIR FILTERS 12/CS SKU: I-18241 \$59.95
- 18X24X2 CARBON FILTERS 6/CS SKU: I-18242CARBON \$125.00
- 18X24X2 PLEATED FILTER 12/CS SKU: I-18242 \$68.00
- 18X24X6 METAL HEPA 1/CS SKU: I-18246M \$189.00



OMNIAIRE 2200C/2200S & FORCE AIR 2000EC & NOVAIR 2000

- 24X24X1 POLY PAD FILTERS 40/CS SKU: I-24241 \$69.00
- 24X24X2 CARBON FILTER 6/CS SKU: 24242CARBON \$215.00
- 24X24X2 PLEATED FILTERS 12/CS SKU:I-24242 \$65.00
- HEPA PARTICLE BOARD 24X24X12 1/CS SKU:I-242412 \$169.00
- METAL HEPA 24X24X12 1/CS SKU:I-242412M \$184.95
- RING PANEL FILTER 24/CS SKU:2424RING \$78.50

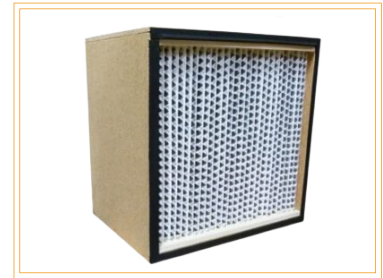


OMNIAIRE 2000C

- 24X18X12 HEPA 1/CS SKU: I-OAH2418 \$295.00
- PREFILTERS 20/CS SKU: I-OPF2518 \$119.95

OMNIAIRE 1000V/1200V

- 18X18 PREFILTER 20/CS SKU: I-OAP1818 \$85.00
- HEPA 1/CS SKU: I-OAH1616 \$295.00



FORCE AIR 700

- 13X13X1 RING PANEL FILTER 24/CS SKU: I-94020104 \$79.00
- 17.5X17.5X1 PRE-FILTER 40/CS SKU: I-94010117 \$39.95
- CARBON FILTER 6/CS SKU: I-FA700CARBON \$179.00
- HEPA 1/CS I-121211.5HEPA \$110.00
- METAL HEPA 1/CS SKU:I-121211.5METALHEPA \$125.00

ABATEMENT TECHNOLOGIES PREDATOR 600 & 750

- 16X16X1 HOGHAIR FILTERS 12/CS I-16161 \$47.95
- 16X16X2 CARBON FILTERS 6/CS I-16X16X2CARBON \$189.00
- 16X16X2 PLEATED FILTERS 12/CS I-16162 \$68.00



OMNIAIRE 600N

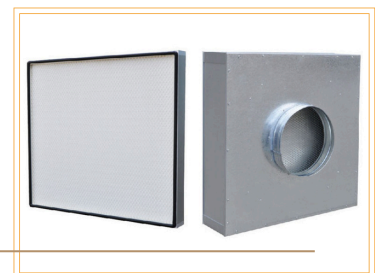
- 16X16X6 HEPA 1/CS SKU: I-OAH15156P \$235.00
- PREFILTER 20/CS SKU: I-OAP1818 \$85.00

OMNIAIRE 600V

- 12X12X1 PLEATED FILTERS 12/CS SKU: I-12121 \$45.00
- 12X12X2 CARBON FILTERS 6/CS SKU: I-12X12X2C \$108.00
- HEPA 1/CS I-121211.5HEPA \$110.00
- METAL HEPA 1/CS I-121211.5METALHEPA \$125.00
- PREFILTER PADS 20/CS SKU: I-MFP1313 \$57.50

TERMINAL HEPA FILTER BOX W/ 10" DUCT RING

- 2X2 SKU:I-242412-10DCM \$599
- 2X4 SKU: I-244812-10DCM \$775



DRI-EAZ HEPA 500

- PREFILTER SKU: I-PREFILTER FOR HEPA500 \$89.00
- PREFILTERS 16X16X2 SKU: I-16162 \$68.00





MANIFOLDS, CLAMPS, & DUCTING



12" MANIFOLD 2200C
12" MANIFOLD 2000C

I-OAIM2200-12 : \$134.95
I-OAIM2000-12 : \$119.00



8" MANIFOLD 600V
MED

SKU: I-MFIM8
\$65.00



12" MANIFOLD FA2000
10" MANIFOLD FA700

I-INTADP-12- \$125.00
I-INTADP-10- \$99.50



SPLICE COLLAR

Flex Duct Connector Splice Collar
12" or 10"
SKU: I-splice-collar
\$32.50



QUICK CLAMP 14" OR 12"

Fits 2000 CFM Units-
SKU: I-QCW14 / \$20.00
Fits 600 CFM Units-
SKU: I-QCW12 / \$20.00



LAYFLAT DUCTING FITS
6", 8", 10", & 12"

SKU: I-20X500LAYFLAT
\$149.00



CLEAR MYLAR FLEX DUCT

I-C1225HD- 12X25- 3 pieces / \$145
I-C1025HD- 10X25- 4 pieces / \$135
I-C825HD- 8X25- 5 pieces / \$150



THERMAFLEX HEAVY
DUTY DUCTING

I-HD12DUCT- 12X25 / \$165.49
I-HD10DUCT- 10X25 / \$139.00
I-HD8DUCT- 8X25 / \$124.95



12" HEAVY DUTY CLEAR

SKU: I-HDFLEXCLEAR
\$236.00



MINTIE MOBILE CONTAINMENT & ACCESSORIES



ECU4

Portable 3'x5' erected 7'x10.6' lightweight rip-stop poly fabric, flame-rated U.S. NFPA 701
SKU: I-MTIECU4

\$3,695.00



ECU4 BUNDLE W/OUT AIR SCRUBBER

ECU4, Mobile Platform, Tow Cart, Disposable Envelopes

SKU: I-ECU4BUNDLE

\$4,995.00



ECU4 BUNDLE W/ AIR SCRUBBER

ECU4, Mobile Platform, Tow Cart, Disposable Envelopes, 600N Air Scrubber, Clamp

SKU: I-MTIECU4-MPPWA

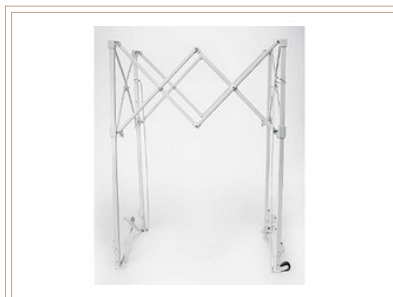
\$5,995.00



TOW CART

SKU: I-ECU-MPTC

\$385.00



REPLACEMENT FRAME

SKU: I-MTIECU4-FRC

\$2,150.00



REPLACEMENT ENCLOSURE

SKU: I-MTIECU4E

\$1,495.00



SIDEWALL ACCESS FLANGE

Used for Anteroom
SKU: I-MTIECU4-SWF

\$895.00



FLANGE CORRIDOR

Used for Anteroom

SKU: I-ECU2-CORFLA

\$1,395.00



ECU4 W/ 2 ADDITIONAL ENVELOPES

SKU: I-ECU4-EXTP-3

\$5,895.00





MOBILE ANTEROOM & CONTAINMENT CARTS



HEPACART® MOBILE ANTEROOM

Heavy duty AnteRoom seals magnetically to the door frame.

- 51.75"W x 24"D x 85.5"T - 160 lbs.
- For room isolation, containment, and emergency preparedness
- All models include the heavy-duty, magnetically sealing aluminum HEPACART® AnteRoom module, floor levelers, three windows, flex-hose adaptor and shut off plates.

SKU: I-HCAR4818

\$5,899.00



HEPACART® 55

Mobile ceiling access cart for containment & filtration

- Working Dimensions:
 - Collapsed: 29W X 55L X 68T
 - Extended: Reaches up to 10'6"
- HEPA-Filtered Negative Air Machine
 - Medical grade 99.99% at .03 microns MERV 18
 - Fan rated at 750 CFM
- Electrical
 - 25ft. retractable ext. cord, outlets & lighting
- Most Versatile Raise/Lower Mechanism:
 - Telescoping, spring-loaded extension poles
 - Raises up to 14' with additional option tall enclosure & moves in 90 seconds or less with no tools.

SKU: I-HEPACART55

\$9,995.00



SOLUTION 10

- Easy 3-Minute Setup
- HEPA Filtration System
- Available in 10' & 13'
- Fits in Doorways & Elevators
- Built-in Electrical Outlets
- Exterior Pocket Allows for the Visibility of ICRA Documentation
- Easy to Move & Operate

SKU: I-SOLUTION10

\$10,454.40



CONTAINMENT ITEMS



FIRE RETARDANT POLY

6 mil Anti-Static- 12'x100' Roll

SKU: I-W12ASFR

\$149.99



FIRE RETARDANT POLY

6 mil Anti-Static- 20'x100' Roll

SKU: I-20X100

\$199.99



CORRUGATED SURFACE SHIELD

4x8 Fire Resistant-Plastic Sheeting

SKU: I-PLS4896W4 / \$59.00

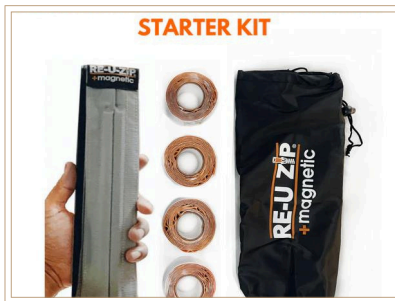


RE-U-ZIP® MAGNETIC DUST BARRIER DOOR KIT

- 1 x Cut-to-Size, 12Mil Vinyl Barrier Panel
- 1 x Reusable Magnetic Entry Strip (80" Length)
- 1 x Fastener Strips (24' Hook & 24' Loop)
- 4 x Mounting Strip Re-Fill

SKU: I-MagDoorKit

\$125.00



RE-U-ZIP® MAGNETIC DUST BARRIER ENTRY STRIP STARTER KIT

- 1x Magnetic Entry Strip (80" x 2.25")
- 4x Mounting Strips
- 1x Magnetic Entry Strip Carry Bag

SKU: I-MagStripKit

\$64.95



RE-U-ZIP® MOUNTING STRIP RE-FILL

3 x RE-U-ZIP® Mounting Strip

SKU: I-Re-U-ZipMountingStrips

\$42.99



ZIPWALL®



ZIPWALL® KITS

10' Poles w/ 2 Standard Zippers, & 1 Carry Bag (4-Pack)

I-ZP4- \$174.99

12' Poles w/ 2 Standard Zippers, & 1 Carry Bag (4-Pack)

I-SLP4- \$265.00



HEAVY-DUTY ZIPPER

12 Pack-12 Zippers, 12 Flap Hooks, & 1 ZipperKnife Sheeting Cutter

I-HDAZ12- \$111.00

2 Pack- 2 Zippers, 2 Flap Hooks, & 1 ZipperKnife Sheeting Cutter

I-HDAZ2- \$23.99



ZIPWALL SPRING LOADED POLES

10' Poles (2-Pack)

I-ZP2- \$92.00

12' Poles (2-Pack)

I-SLP2- \$149.99

20' Poles (2-Pack)

I-KT20- \$259.99

12' Poles (6-Pack)

I-SLP6- \$395.00



ZIPWALL® FOAMRAIL™

Adjustable Seal extends from 4'3" to 8'

I-SPN- \$59.99

Adjustable Seal extends from 2'3" to 4'

I-SPNM- \$34.99

Seal (2-Pack) 4' Seals & 2 T-Clip

I-FR2- \$59.00



COMMERCIAL DOOR KIT

Flame Retardant Door up to 4' x 8'

1 Roll 1" x 24 Double-Sided Tape

SKU: ZDC

\$42.95



MAGNETIC DUST BARRIER DOOR KIT

Adjustable Door Panel & Parts
SKU: I-MDK

\$253.50



DUST BARRIER TOOLKIT

12' poles, 6 FoamRail Span™, 2 Tracks, 1 SideBridge™4 pack, 1-double-sided tape, 5 heads & plates, 5 GripDisk™, 2 floor adaptors, 2 heavy-duty zippers, 1 ZipDoor®, 2 Edge™ heads & plates, 1 ZipFast™

I-ZWTK- \$1,349.00



SIDEPACK WALLMOUNT KIT

6 Side Clamp wall mounts

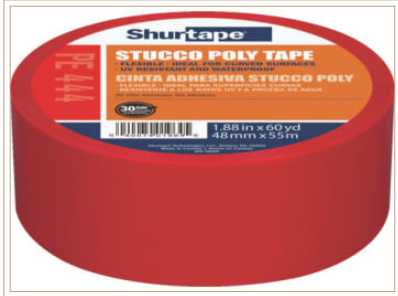
6 3' FoamRail™ Span

SKU: I-SDPK

\$225.00



CONTAINMENT ITEMS



UV RESISTANT POLY RED TAPE

SKU: I-P444

\$225.00 Per Case (24)



DECKER 3" WHITE TAPE

SKU: I-DT42A

\$225.00 Per Case (16)



BLUE CONTAINMENT TAPE

SKU: I-CP327

\$227.00 Per Case (24)



DOUBLE-SIDED CONTAINMENT TAPE

SKU: I-DS154

\$275.00 Per Case (24)



2" FIRE RATED TAPE

SKU: I-FRTAPE

\$349.00 Per Case (24)

\$18.95 Per Roll



CARPET SHIELD

*3 mil Anti-Static- 36"x500 Roll
Self-Adhesive Protection Film*

SKU: I-CarpetPro

\$175.00



HVAC GRILL MASK

SKU: I-GRILL MASK

2 Per Case 12X200ft roll /\$52.60



POLYHANGERS 2

Hang Poly Directly to Wall
Moldings of Acoustic Ceilings

SKU: I-PH2

Pack of 100 \$145.00



POLYHANGERS 3

Hang Poly Sheeting Directly from
Drop Ceiling Grid

SKU: I-PH3

Pack of 100 \$275.00





EDGE GUARD HARD WALL SYSTEMS

ICRA Solutions - Edge Guard Price List

Panel Sizes 7'-8" - 10' -0"

Part Number	Part Description	Opal/Semi-Clear		Clear	
		Price	You'll Pay	Price	You'll Pay
4000	4' Panel Assembly	\$ 640.00	\$ 608.00	\$ 680.00	\$ 646.00
4001	3' Panel Assembly	\$ 605.00	\$ 574.75	\$ 640.00	\$ 608.00
4002	2' Panel Assembly	\$ 475.00	\$ 451.25	\$ 500.00	\$ 475.00
4002.1	2' Panel Assemble with HEPA Filtered Air Discharge Port	\$ 550.00	\$ 522.50	\$ 570.00	\$ 541.50
4003	48" Panel w/44" Door- Lever Style Locket	\$ 1,095.00	\$ 1,040.25	\$ 1,160.00	\$ 1,102.00
4003PB	48" Panel w/44" Door- Pushbutton Combination Lockset	\$ 1,295.00	\$ 1,230.25	\$ 1,360.00	\$ 1,292.00
4004	Hinged Corner Assembly	\$ 200.00	\$ 190.00		
4005	6" Panel Assembly	\$ 290.00	\$ 275.50	\$ 305.00	\$ 289.75
4006	12" Panel Assembly	\$ 315.00	\$ 299.25	\$ 325.00	\$ 308.75
4007	Outside Corner Post	\$ 170.00	\$ 161.50		
4008	52" Panel w/48" Door- Lever Style Locket	\$ 1,320.00	\$ 1,254.00	\$ 1,380.00	\$ 1,311.00
4008PB	52" Panel w/48" Door- Pushbutton Combination Lockset	\$ 1,520.00	\$ 1,444.00	\$ 1,580.00	\$ 1,501.00
4009	T Post	\$ 170.00	\$ 161.50		
4010	36" Panel w/32" Door- Lever Style Lockset	\$ 995.00	\$ 945.25	\$ 1,015.00	\$ 964.25
4010PB	36" Panel w/32" Door- Pushbutton Combination Lockset	\$ 1,195.00	\$ 1,135.25	\$ 1,215.00	\$ 1,154.25
4012	Outside Hinged Corner	\$ 270.00	\$ 256.50		
7000	7' Wide Panel w/6' 8" Double Door Opening - Lever Style Lockset - 10' Tall	\$ 2,195.00	\$ 2,085.25	\$ 2,295.00	\$ 2,180.25
7001	92" Wide Sliding Door Panel (ships in 3 parts) 10' Tall	\$ 2,495.00	\$ 2,695.00	\$ 2,595.00	\$ 2,795.00
7002	60" Panel w/ 56" Door- Lever Style Locket	\$ 1,395.00	\$ 1,325.25	\$ 1,545.00	\$ 1,467.75
7002 PB	60" Panel w/ 56" Door- Pushbutton Combination Lockset	\$ 1,595.00	\$ 1,568.00	\$ 1,745.00	\$ 1,657.75

Packages

Part Number	Part Description	Opal/Semi-Clear		Clear	
		Price	You'll Pay	Price	You'll Pay
6000	8' x 2' Anteroom Type Enclosure				
	Qty 1 - P/N 4000 - 4' Panel Assembly	\$ 640.00	\$ 608.00	\$ 680.00	\$ 646.00
	Qty 1 - P/N 4003- 48" Panel w/44" Door- Lever Style Locket	\$ 1,095.00	\$ 1,040.25	\$ 1,160.00	\$ 1,102.00
	Qty 1 - P/N 4002.1 - 2' Panel Assemble with HEPA Filtered Air Discharge Port	\$ 550.00	\$ 522.50	\$ 570.00	\$ 541.50
	Qty 1 - P/N 4002 - 2" Panel Assembly	\$ 475.00	\$ 451.25	\$ 500.00	\$ 475.00
	Qty 2 - P/N 4004 - Hinged Corner Assembly	\$ 400.00	\$ 380.00	\$ 400.00	\$ 380.00
	Qty 12 - P/N 3003 - Closure Strip	\$ 105.00	\$ 99.75	\$ 105.00	\$ 99.75
	Qty 1 - P/N 4011- Panel Transport Cart	\$ 305.00	\$ 289.75	\$ 305.00	\$ 289.75
	Total	\$ 3,570.00	\$ 3,391.50	\$ 3,720.00	\$ 3,534.00
6005	12' x 2' Anteroom Type Enclosure				
	Qty 2 - P/N 4000 - 4' Panel Assembly	\$ 1,280.00	\$ 1,216.00	\$ 1,240.00	\$ 1,178.00
	Qty 1 - P/N 4003- 48" Panel w/44" Door- Lever Style Locket	\$ 1,095.00	\$ 1,040.25	\$ 1,160.00	\$ 1,102.00
	Qty 1 - P/N 4002.1 - 2' Panel Assemble with HEPA Filtered Air Discharge Port	\$ 550.00	\$ 522.50	\$ 570.00	\$ 541.50
	Qty 1 - P/N 4002 - 2' Panel Assembly	\$ 475.00	\$ 451.25	\$ 500.00	\$ 475.00
	Qty 2 - P/N 4004 - Hinged Corner Assembly	\$ 400.00	\$ 380.00	\$ 400.00	\$ 380.00
	Qty 12 - P/N 3003 - Closure Strip	\$ 105.00	\$ 99.75	\$ 105.00	\$ 99.75
	Qty 1 - P/N 4011- Panel Transport Cart	\$ 305.00	\$ 289.75	\$ 305.00	\$ 289.75
	Total	\$ 4,210.00	\$ 3,999.50	\$ 4,280.00	\$ 4,066.00
6010	4' x 2' Anteroom Type Enclosure				
	Qty 1 - P/N 4003- 48" Panel w/44" Door- Lever Style Locket	\$ 1,095.00	\$ 1,040.25	\$ 1,160.00	\$ 1,102.00
	Qty 1 - P/N 4002.1 - 2' Panel Assemble with HEPA Filtered Air Discharge Port	\$ 550.00	\$ 522.50	\$ 570.00	\$ 541.50
	Qty 1 - P/N 4002 - 2' Panel Assembly	\$ 475.00	\$ 451.25	\$ 500.00	\$ 475.00
	Qty 2 - P/N 4004 - Hinged Corner Assembly	\$ 400.00	\$ 380.00	\$ 400.00	\$ 380.00
	Qty 12 - P/N 3003 - Closure Strip	\$ 105.00	\$ 99.75	\$ 105.00	\$ 99.75
	Qty 1 - P/N 4011- Panel Transport Cart	\$ 305.00	\$ 289.75	\$ 305.00	\$ 289.75
	Total	\$ 2,930.00	\$ 2,783.50	\$ 3,040.00	\$ 2,888.00
6015	3' x 2' Anteroom Type Enclosure				
	Qty 1 - P/N 4010 - 36" Panel w/32" Door- Lever Style Lockset	\$ 995.00	\$ 945.25	\$ 1,015.00	\$ 964.25
	Qty 1 - P/N 4002.1 - 2' Panel Assemble with HEPA Filtered Air Discharge Port	\$ 550.00	\$ 522.50	\$ 570.00	\$ 541.50
	Qty 1 - P/N 4002 - 2' Panel Assembly	\$ 475.00	\$ 451.25	\$ 500.00	\$ 475.00
	Qty 2 - P/N 4004 - Hinged Corner Assembly	\$ 400.00	\$ 380.00	\$ 400.00	\$ 380.00
	Qty 12 - P/N 3003 - Closure Strip	\$ 105.00	\$ 99.75	\$ 105.00	\$ 99.75
	Qty 1 - P/N 4011- Panel Transport Cart	\$ 305.00	\$ 289.75	\$ 305.00	\$ 289.75
	Total	\$ 2,830.00	\$ 2,688.50	\$ 2,895.00	\$ 2,750.25

www.icrasolutions.com

info@icrasolutions.com

678-412-5132

www.icrasolutions.com | 678-412-5132 | info@icrasolutions.com





EDGE GUARD HARD WALLS

ICRA Solutions - Edge Guard Price List

Panel Size 12' Tall						
Part Number	Part Description	Opal/Semi-Clear		Clear		
		Price	You'll Pay	Price	You'll Pay	
4020	4' Panel Assembly	\$710.00	\$674.50	\$ 745.00	\$ 707.75	
4021	3' Panel Assembly	\$660.00	\$627.00	\$ 695.00	\$ 660.25	
4022	2' Panel Assembly	\$530.00	\$503.50	\$ 555.00	\$ 527.25	
4022.1	2' Panel Assembly with HEPA Filtered Air Discharge Port	\$605.00	\$574.75	\$ 630.00	\$ 598.50	
4023	48" Panel w/44" Door - Lever Style Lockset	\$1,200.00	\$1,140.00	\$1,240.00	\$1,178.00	
4023PB	48" Panel w/44" Door - Pushbutton Combination Lockset	\$1,400.00	\$1,330.00	\$1,440.00	\$1,368.00	
4024	Hinged Corner Assembly	\$225.00	\$213.75	\$ -	\$ -	
4025	6" Panel Assembly	\$325.00	\$308.75	\$ 340.00	\$ 323.00	
4026	12" Panel Assembly	\$350.00	\$332.50	\$ 370.00	\$ 351.50	
4027	Outside Corner Post	\$190.00	\$180.50	\$ -	\$ -	
4028	52" Panel w/48" Door - Lever Style Lockset	\$1,435.00	\$1,363.25	\$1,475.00	\$1,401.25	
4028PB	52" Panel w/48" Door - Pushbutton Combination Lockset	\$1,635.00	\$1,553.25	\$1,675.00	\$1,591.25	
4029	T Post	\$190.00	\$180.50	\$ -	\$ -	
4030	36" Panel w/32" Door - Lever Style Lockset	\$1,095.00	\$1,040.25	\$1,135.00	\$1,078.25	
4030PB	36" Panel w/32" Door - Pushbutton Combination Lockset	\$1,295.00	\$1,230.25	\$1,335.00	\$1,268.25	
4032	Outside Hinged Corner 12' Tall	\$ 325.00	308.75	\$ -	\$ -	
7020	7' Wide Panel w/6'8" Double Door Opening - Lever Style Lockset - 12' Tall	\$ 2,295.00	2180.25	\$2,295.00	\$ 2,180.25	
7021	92" Wide Sliding Door Panel (ship in 3 parts) 12' Tall	\$ 2,895.00	2850.25	\$2,995.00	\$ 2,945.25	

Panel Size 14' Tall						
Part Number	Part Description	Opal/Semi-Clear		Clear		
		Price	You'll Pay	Price	You'll Pay	
4040	4' Panel Assembly	\$880.00	\$836.00	\$ 920.00	\$ 874.00	
4041	3' Panel Assembly	\$825.00	\$783.75	\$ 860.00	\$ 817.00	
4042	2' Panel Assembly	\$660.00	\$627.00	\$ 700.00	\$ 665.00	
4042.1	2' Panel Assembly with HEPA Filtered Air Discharge Port	\$740.00	\$703.00	\$ 775.00	\$ 736.25	
4043	48" Panel w/44" Door - Lever Style Lockset	\$1,440.00	\$1,368.00	\$1,495.00	\$1,420.25	
4043PB	48" Panel w/44" Door - Pushbutton Combination Lockset	\$1,640.00	\$1,558.00	\$1,695.00	\$1,610.25	
4044	Hinged Corner Assembly	\$270.00	\$256.50	\$ -	\$ -	
4045	6" Panel Assembly	\$370.00	\$351.50	\$ 385.00	\$ 365.75	
4046	12" Panel Assembly	\$430.00	\$408.50	\$ 450.00	\$ 427.50	
4047	Outside Corner Post	\$245.00	\$232.75	\$ -	\$ -	
4048	52" Panel w/48" Door - Lever Style Lockset	\$1,560.00	\$1,482.00	\$1,595.00	\$1,515.25	
4048PB	52" Panel w/48" Door - Pushbutton Combination Lockset	\$1,760.00	\$1,672.00	\$1,795.00	\$1,705.25	
4049	T Post	\$245.00	\$232.75	\$ -	\$ -	
4050	36" Panel w/32" Door - Lever Style Lockset	\$1,340.00	\$1,273.00	\$1,375.00	\$1,306.25	
4050PB	36" Panel w/32" Door - Pushbutton Combination Lockset	\$1,540.00	\$1,463.00	\$1,575.00	\$1,496.25	
4052	Outside Hinged Corner - 14' Tall	\$270.00	\$256.50	\$ -	\$ -	
7040	7' Wide Panel w/6'8" Double Door Opening - Lever Style Lockset - 14' Tall	\$2,445.00	\$2,322.75	\$2,495.00	\$ 2,370.25	
7041	92" Wide Sliding Door Panel (ships in 3 parts) 14' Tall	\$3,395.00	\$3,325.25	\$3,495.00	\$ 3,420.25	

Panel Extenders						
Part Number	Part Description	Opal/Semi-Clear				
		Price	You'll Pay			
4003 EX 9	9" Tall Extension Panel for Doors (specify width)	\$75.00	\$71.25			
4003 EX 18	18" Tall Extension Panel for Doors (specify width)	\$100.00	\$95.00			
4003 EX 24	24" Tall Extension Panel for Doors (specify width)	\$125.00	\$118.75			

Accessories						
Part Number	Part Description	Opal/Semi-Clear				
		Price	You'll Pay			
3001	Grid Clip Assembly	\$ 7.45	\$ 7.08			
3002	Cam Lock Assembly	\$ 5.15	\$ 4.89			
3003	Closure Strip	\$ 8.00	\$ 7.60			
3004	Screw Jack Assembly	\$ 6.65	\$ 6.32			
3005	Digital Differential Pressure Gage Kit	\$ 275.00	\$ 261.25			
3005.1	Gauge Bracket Kit	\$ 25.00	\$ 23.75			
3006	Pushbutton Combination Lockset	\$ 200.00	\$ 190.00			
3007	Leverstyle Lockset	\$ 50.00	\$ 47.50			
3008	Hydraulic Door Closer	\$ 65.80	\$ 62.51			
3011	1 5/8" T-Nut & Knob (replacement for adjustable top)	\$ 2.00	\$ 1.90			
3012	Passage Lockset (does not lock)	\$ 50.00	\$ 47.50			
4003SB	Slice Bar for Extension Panels (price is per 2)	\$ 15.00	\$ 14.25			
4011	Panel Transport Cart	\$ 305.00	\$ 289.75			





PRESSURE MONITORS & PARTICLE COUNTERS



OMNIGUARD 6 PRESSURE MONITOR

Built-in Cell Modem; Printer & Wall Hanger; USB Flash Drive
SKU: I-10G6
\$1,695.00



EXTECH HD700 - DIFFERENTIAL PRESSURE MONITOR

±2psi range, 11 Selectable units of measure
Max/Min/Avg recording and Relative time stamp
SKU: I-EXHD700 \$285.00



DWYER VAN-O-METER

Swing Vane Anemometer

SKU: I-480
\$65.00



LP102F / LN102F

Visual POSITIVE OR NEGATIVE Passive Airflow Indicator w/ Fire Stop
SKU: I-LP102F & I-LN102F
\$921.15



LP102SF / LN102SF

Visual POSITIVE OR NEGATIVE Passive Airflow w/ Smoke Door
SKU: I-LP102SF & I-LN102SF
\$969.00



DUAL102F

Visual POSITIVE & NEGATIVE Dual Sided Passive Airflow Indicator w/ Fire Stop
SKU: I-DUAL102F
\$1,223.00



EXTECH HYGRO-THERMOMETER

Displays Humidity & Temperature
Records Min/Max values

SKU: I-Hygro-Thermometer \$47.50



REED LM 8000 MULTIFUNCTION METER

Measures air velocity, air temperature, ambient temperature, relative humidity, light & contact temperature

SKU: I-REEDLM \$195.00



VPC300 VIDEO PARTICLE COUNTER WITH CAMERA

Measures up to 6 channels of particle sizes air temp. & Relative Humidity. Reports videos, photos & data points

SKU: I-EXPC \$1,945.00



INDUSTRIAL HEPA VACUUMS & ACCESORIES

FEIN TURBO II X AC HEPA WET/DRY VACUUM, AUTO CLEAN, 8.4 GALLON



- 1 HEPA filter
- 1 disposal bag
- 1 suction hose 13ft
- 1 tool coupling with suction control
- 1 step adapter
- 2 metal extension tubes
- 1 combination tool with interchangeable inserts, 1 crevice nozzle, 1 dusting brush, 1 elbow

SKU: I-TURBOXAC

\$735.00



5 PACK OF VAC BAGS

SKU: I-HEPAVACBAG1

\$53.99



HEPA FILTER

SKU: I-FEINHEPAFILTER

\$149.00

NILFISK ATTIX 30 WET/DRY VACUUM, 8 GALLON



- 10'L x 1-1/2" Dia. hose
- chrome curved wand
- 2 pc. chrome extension wand
- floor nozzle-combination
- crevice nozzle
- brush nozzle
- universal nozzle
- washable filter
- aluminum extension tube.

SKU: I-107418445

\$795.00



FLEECE FILTER BAGS

SKU: I-107419591

\$53.00



HEPA FILTER

SKU: I-302001095

\$169.00

NILFISK ATTIX 50 WET/DRY VACUUM, 12 GALLON



- 10'L x 1-1/2" Dia. hose
- Soft-start feature
- chrome curved wand
- 2 pc. chrome extension wand
- floor nozzle-combination
- crevice nozzle
- brush nozzle
- universal nozzle
- washable filter
- one paper bag

SKU: I-302004233

\$855.00



FLEECE FILTER BAGS

SKU: I-107419592

\$ 53.00



HEPA FILTER

SKU: I-302001095

\$ 169.00



PPE

PERSONAL PROTECTIVE EQUIPMENT



3 PLY MASK

FDA Approved
50 Mask/Case
SKU: I-DFM

50/cs \$19.50



KN95 MASKS

SKU: I-KN95

20/cs \$29.99



FACE SHIELDS

Sold individually
Sweatband & Shield
SKU: I-FaceShield

\$14.95 each



POWDER FREE NITRILE GLOVES M, L, XL

100 gloves/cs \$19.95



POLYPROPYLENE CAP

21" White SKU: I-BCAP
21" Red SKU: I-RBouffantCap

100/cs \$19.99



BEARD COVER

White Polypropylene
SKU: I-BeardCover

100/cs \$19.99



COVERALL HOOD

Elastic Wrist & Ankles w/ Hood
No Boot
I-PIP3606/2XL
I-PIP3606/3XL

25/cs \$169.00



COVERALL OPEN

White Zipper Front w/ Open Wrist
& Ankle
I-PIP3600/2XL
I-PIP3600/3XL

25/cs \$169.00



COVERALL ELASTIC

White Zipper Front w/ Elastic
Wrist & Ankle
I-DP125SWH-2X
I-DP125SWH-3X

25/cs \$159.00



PPE

PERSONAL PROTECTIVE EQUIPMENT



BLUE SHOE COVERS

Fits up to size 18 work boot

SKU: I-CSBSCB

50 Pairs/ cs \$35.99



WHITE SHOE COVERS

Fits up to size 18 work boot

SKU: I-CSBSCW

50 Pairs/ cs \$35.99



WATERPROOF BLUE SHOE COVERS

Fits up to size 18 work boot

SKU: I-CSBSCWPDB

50 Pairs/ cs \$35.99



AUTOMATIC BOOTIE DISPENSER

SKU: I-KBLG

\$487.50



WATERPROOF NON-SKID DISPENSER SHOE COVERS

SKU: I-KBSB600

600 pairs \$355.95



NON-SKID DISPENSER SHOE COVERS

SKU: I-KBNS28-750

750 pairs \$265.00



WATERPROOF BLUE DISPENSER SHOE COVERS

SKU: I-KBPE825

825 pairs \$275.00



RADNOR® SAFETY GLASSES

Clear Frame & Clear Polycarbonate Hard Coat Lens
SKU: I-SafetyGlasses

12/ cs \$35.99



SNEEZE GUARDS

Size's:
43x36 w/ 7x23 Opening
I-SNG4336 : \$195.00
29x30 w/ 6x14 Opening
I-SG2930 : \$165.00





MISC ACCESORIES



SHUT GUN

Shut off a sprinkler quickly

SKU: I-SG100

\$73.95



WYPALL WIPERS

White cloth-like towels for cleaning up oil, water & grease

SKU: I-Towels

120/ cs \$19.00



HUSKY CONTRACTOR TRASH BAGS

SKU: I-HeavyDTrashBags

50/cs \$39.99



MAX AIR FOGGER

SKU: I-MAXFOG

\$595.00



KEYBOARD COVERS

Pack of 100 Disposable Covers

SKU: I-KeyboardCovers

\$49.95



FOSTER 40-80 FIRST DEFENSE DISINFECTANT

5 Gallon Pail: I-F40-80 \$90.00

(6) 32 oz Bottles: \$199.00

I-F40-80spraybottlecase

32 oz Bottle- \$14.99



CUBIC YARD TILT TRUCK

Color options - Black or Gray

1.1 Cubic Yard- 99lbs

SKU: I-1.1TiltTruck \$669.00

1/2 Cubic Yard- 79lbs

SKU: I-1/2TiltTruck \$645.00



TILT TRUCK LID

Color options - Black or Gray

1.1 Cubic Yard Lid-

SKU: I-Lid \$179.00

1/2 Cubic Yard Lid-

SKU: I-1/2Lid \$185.00



TOOL PUSH CART

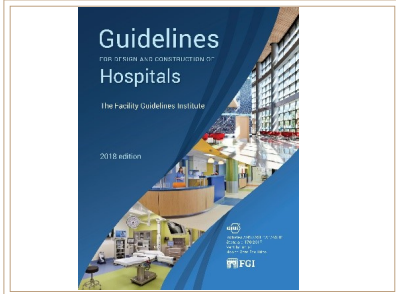
40x26 with 5" Casters

SKU: I-PushCart

\$295.00

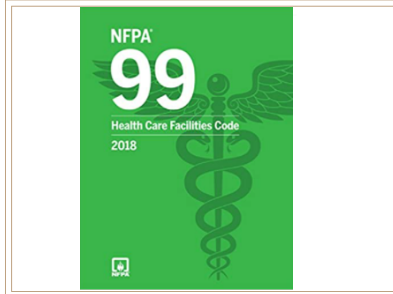


HOSPITAL CONSTRUCTION RESOURCES & SIGNAGE



FGI GUIDELINES

Guidelines for Design & Construction of Hospitals
\$275.00 SKU: I-FGI2014, I-FGI2018, I-FGI2022



NFPA 99

Health Care Facilities Code Book
\$175.00 SKU: I-NFPA99-2012
\$175.00 SKU: I-NFPA99-2018
\$169.00 SKU: I-NFPA99-2024



NFPA 101

Life Safety Code
\$169.00 SKU: I-NFPA101-2012
\$195.00 SKU: I-NFPA101-2018
\$195.00 SKU: I-NFPA101-2024



EXIT SIGN

Size: 14x10 Right or Left
SKU: I-ExitWithRightArrow
SKU: I-ExitWithLeftArrow
\$19.95



NOTICE OF CONSTRUCTION SIGN

Size: 14x10
SKU: I-PleaseExcuse
\$19.95



NO TRESPASSING SIGN

Size: 14x10
SKU: I-NoTrespassing
\$15.95



CLEAR PERMIT HOLDERS

Pack of 4
SKU: I-AWSH
\$29.50



KITS



FLOOD KIT

Items Included:

- 1 trash cart with lid
- 1-poly
- 4-Zipwall Poles
- 12- zippers
- 2-rolls white tape
- 1-caution tape
- 1-cs sticky mats
- 6-water activated flood bags
- 50-absorbent pads
- 50- pairs gloves
- 5-coveralls
- 1-cs masks
- 2-caution signs
- 50-waterproof shoe covers
- 2-buckets
- 1-squeegee mop
- 1-mop w/ extra mop head
- 1- leak diverter
- 1-shut gun

SKU: I-FloodKit

\$2,495.00

SPILL KIT

Items Included:

- 1- 20 Gallon Drum with twist on lid
- 12- 15 x 19" Pads
- 3- 3" x 12' Sorbent Socks
- 2- 18 x 18" Pillows
- 1- pair Nitrile Gloves
- 1- Emergency Handbook
- 1- pair Goggles
- 3- Disposal Bags

SKU: I-SpillKit

\$250.00





KITS

Hallway Kit



HALLWAY KIT

Kit Includes:

- Custom 6' Panel w/ 56"-wide door (Clear)
- 36" Panel (Clear)
- Closure Strip (Clear) to be used over/ under handrail areas

SKU: I-HALLWAYKIT

\$2,030.00

Negative Pressure Patient Room Kit



NEG PRESSURE PATIENT ROOM KIT

For areas 900 Square Feet or less with your typical 8-9-foot ceiling.

Kit Includes:

- OmniAire 600N Air Scrubber/Neg Air Machine w/ 99.99% HEPA Filtration
- OmniGuard 6 Pressure Monitor w/ Continuous Monitoring & Printer for Paper Readouts
- 10" Thermaflex Heavy Duty Ducting
- 10" Clamp

SKU: I-NegativePressureKit

\$2,950.00

Kit Includes:

- 600N
- OmniGuard 6 Pressure Monitor
- 10" Heavy Duty Ducting- 25 ft.
- 10" Clamp



ICRA WORKSHOPS 2025

ICRA I

January 27
February 24
March 31
April 28
May 23
June 30
July 25
August 25
September 29
October 27
November 24
December 19

FMC

Facilities,
Maintenance,
Contractor
2-Day
In-Person

March 3-4
June 9-10
October 6-7

ADVANCED CONSTRUCTION IN HEALTHCARE WORKSHOPS

CHC RESOURCE REVIEW

February 28
June 20
December 5

CHFM RESOURCE REVIEW

August 11

Register for ICRA Workshops at
www.icrasolutions.com/icra-solutions-trainings-and-workshops/



Visit our website at
WWW.ICRASOLUTIONS.COM/SHOP
to order your
Infection Control Equipment online!



Need ICRA TRAINING for your next
Healthcare Construction Project?
Check out our ICRA Certification Workshops.

678-412-5132
2390 Satellite Blvd. Ste B,
Buford, GA 30518

