



# EQUIPMENT CATALOG

Dust Control and Containment Items  
for Infection Control

2026



678-412-5132  
2390 Satellite Blvd. Ste B,  
Buford, GA 30518

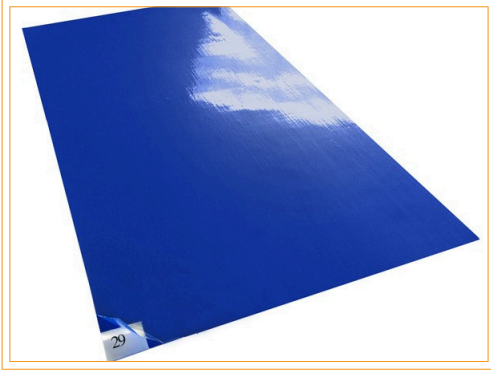


[www.icrasolutions.com](http://www.icrasolutions.com)





# STICKY MATS



## STICKY MATS

24X36 Blue case of 4 pads SKU: I-24x36\_4

**\$89.99**

36x45 Blue Sticky Mats case of 4 pads SKU:I-36X45

**\$130.76**

**18x36 & 26x45 Available Upon Request**



## FRAME FOR STICKY MATS

24X36 SKU: I-PFM2638

**\$72.00/Frame**

36X45 I-36X45frame

**\$131.00/Frame**

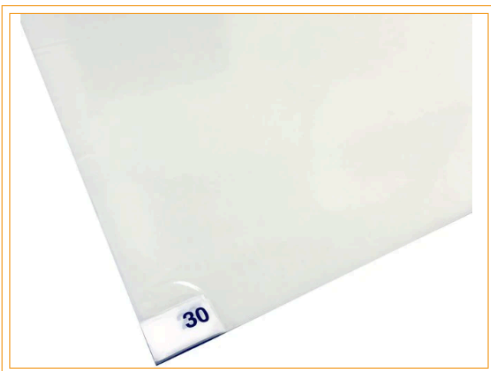


## CUSTOM LOGO STICKY MATS

Custom Logo Frames are Reusable with Gripper Padding. The Sticky Mats are clear & lay over the frame.

SKU: I-CustLogoFrame-24x31

**\$149.99**



## CLEAR STICKY MATS

The Sticky Mats are clear and lay over the frame. Sticky Mats come 8 pads of 30 mats. Each mat is numbered 1-30.

SKU: I-Clearmats

**\$156.00**





# SMALL TO MEDIUM AIR SCRUBBERS

Typical 8-9 ft. 0-900 sq. ft. for projects w/ 3-6 air changes per hour

To calculate CFM= Room Volume (LXWXH) X 6 ACH (Air Changes Per Hour) / 60 (min in an hour)

To calculate ACH= CFM X 60 (min in an hour) / Room Volume (LXWXH)



## OMNIAIRE 600N

200-600 CFM - 2.4 AMPS  
Variable Speed **99.99%** HEPA Filter  
36 lbs. - 10" inlet/outlet  
Flame Retardant Polyethylene Cabinet  
SKU: I-OA600N

**\$1,095.00**



## OMNIAIRE 600V MED

150-550 CFM  
**99.99%** HEPA Filtration @.3 Microns  
58 lbs.  
Variable Speed Unit  
SKU: I-OA600V

**\$1,199.95**



## FORCE AIR 700

400-700 CFM - 3.3 AMPG  
99.97% HEPA Filter  
67 lbs. - 10" outletG  
Variable Speed  
SKU: I-FA700

**\$1095**

Call for quantity discounts



# NEGATIVE AIR MACHINES

1000-2000 sq. ft. projects w/ 3-6 air changes per hour

To calculate CFM= Room Volume (LXWXH) X 6 ACH (Air Changes Per Hour) / 60 (min in an hour)

To calculate ACH= CFM X 60 (min in an hour) / Room Volume (LXWXH)

Call for quantity discounts



## FORCE AIR 2000EC

2 Speed Operation (1975 high - 1000 low CFM)  
1.75 HP Motor - 12" Outlet  
3-Stage Filtration, Power Supply 115VAC  
160 lbs.

SKU: I-FA2000EC

**\$1150.95**



## OMNIAIRE 2200C

2200C-  
2 Speed  
2000 high - 1000 low CFM  
152 lbs. Galvanized Metal

**SKU: I-OA2200C \$1,295 (Particle Board HEPA)**

**SKU: I-OA2200CMED \$1,395.00 (Metal HEPA 99.99%)**



## OMNIAIRE 2000 PRO

500 & 2000 CFM  
99.99% HEPA Filtration @.3 Microns  
Variable Speed Unit  
137 lbs.

**SKU: I-2000PROMED**

**\$1499**



## NOVAIR 2000

2 speed configuration (2000 high - 1000 low CFM)  
Integrated molded carrying handles  
Caster nest for stacking  
Integrated rib for strapping

SKU: I-F2100

**\$1,390.00**



## OMNIAIRE 1200PAC

Patient Isolation System w/ 99.99% HEPA Filter  
UV-C Germicidal Lights  
Variable airflow - 200 - 1100CFM  
Exhaust located at top of unit

SKU: I-OA1200PACM-702

**\$2,885.00**



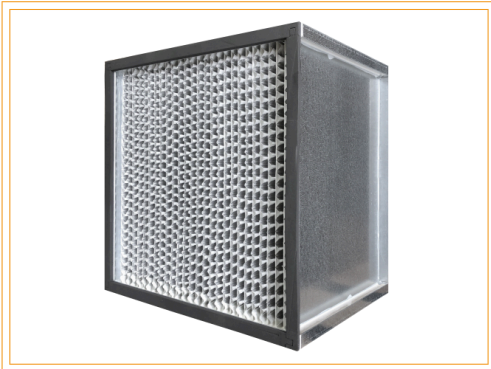
## 10" MANIFOLDS FOR 1200PAC

Manifold SKU: I-OAIM1200P

\$110.95

Exhaust Manifold SKU: I-OAIM1200PE

\$99.95

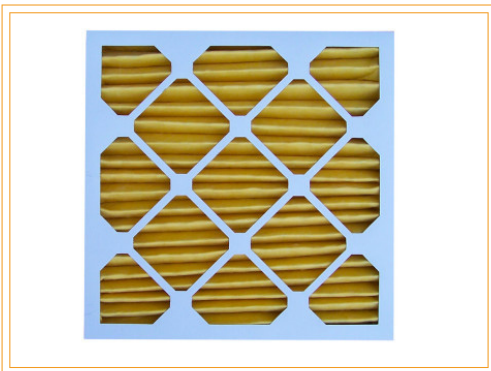


## HEPA FILTER

99.99% HEPA Filter @.3 Microns

SKU: I-OAH1616G

**\$385**

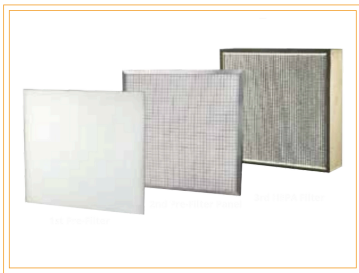


## PRIMARY PLEATED FILTER

Pleated Filter for OmniAire 1200PAC  
16x16x2 MERV 11  
12/cs

SKU: I-OPF1616

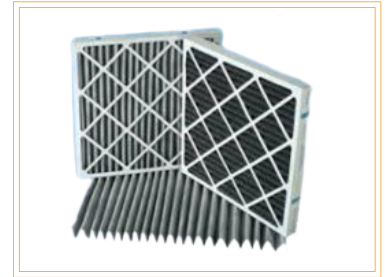
**\$89.00**



# FILTERS

## ABATEMENT TECHNOLOGIES PAS2400

- 18X24X1 HOGHAIR FILTERS 12/CS SKU: I-18241 \$69.95
- 18X24X2 CARBON FILTERS 6/CS SKU: I-18242CARBON \$195
- 18X24X2 PLEATED FILTER 12/CS SKU: I-18242 \$68.95
- 18X24X6 METAL HEPA 1/CS SKU: I-18246M \$195



## OMNIAIRE 2200C/2200S & FORCE AIR 2000EC & NOVAIR 2000

- 24X24X1 POLY PAD FILTERS 40/CS SKU: I-24241 \$69.95
- 24X24X2 CARBON FILTER 6/CS SKU: 24242CARBON \$215.00
- 24X24X2 PLEATED FILTERS 12/CS SKU: I-24242 \$69.95
- HEPA PARTICLE BOARD 24X24X12 1/CS SKU: I-242412 \$179
- METAL HEPA 24X24X12 1/CS SKU: I-242412M \$195
- RING PANEL FILTER 24/CS SKU: 2424RING \$79.95



## OMNIAIRE 2000C

- 24X18X12 HEPA 1/CS SKU: I-OAH2418 \$295.00
- PREFILTERS 20/CS SKU: I-OPF2518 \$119.95

## OMNIAIRE 1000V/1200V

- 18X18 PREFILTER 20/CS SKU: I-OAP1818 \$85.00
- HEPA 1/CS SKU: I-OAH1616 \$295.00

## FORCE AIR 700

- 13X13X1 RING PANEL FILTER 24/CS SKU: I-13x13Ring \$82.50
- 17.5X17.5X1 PRE-FILTER 40/CS SKU: I-94010117 \$39.95
- CARBON FILTER 6/CS SKU: I-FA700CARBON \$179.00
- HEPA 1/CS I-121211.5HEPA \$120
- METAL HEPA 1/CS SKU: I-121211.5METALHEPA \$125.00



## ABATEMENT TECHNOLOGIES PREDATOR 600 & 750

- 16X16X1 HOGHAIR FILTERS 12/CS I-16161 \$52.95
- 16X16X2 CARBON FILTERS 6/CS I-16X16X2CARBON \$189.00
- 16X16X2 PLEATED FILTERS 12/CS I-16162 \$68.50

## OMNIAIRE 600N

- 16X16X6 HEPA 1/CS SKU: I-OAH15156P \$235.00
- PREFILTER 20/CS SKU: I-OAP1818 \$85.00



## OMNIAIRE 600V

- 12X12X1 PLEATED FILTERS 12/CS SKU: I-12121 \$45.00
- 12X12X2 CARBON FILTERS 6/CS SKU: I-12X12X2C \$108.00
- HEPA 1/CS I-121211.5HEPA \$110.00
- METAL HEPA 1/CS I-121211.5METALHEPA \$125.00
- PREFILTER PADS 20/CS SKU: I-MFP1313 \$57.50

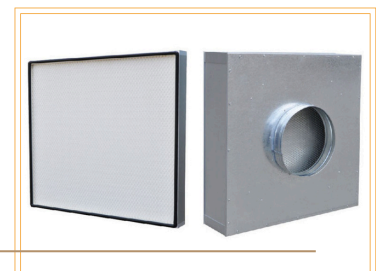
## TERMINAL HEPA FILTER BOX W/ 10" DUCT RING

- 2X2 SKU: I-242412-10DCM \$599
- 2X4 SKU: I-244812-10DCM \$775

## DRI-EAZ HEPA 500

- PREFILTER SKU: I-PREFILTER FOR HEPA500 \$89.00
- PREFILTERS 16X16X2 SKU: I-16162 \$68.00

- POLY PAD FILTER ROLL 24" x 250' x05" White SKU: I-POLYPADFILTERROLL \$210





# MANIFOLDS, CLAMPS, & DUCTING



**12" MANIFOLD 2200C**  
**12" MANIFOLD 2000C**

I-OAIM2200-12 : \$134.95  
I-OAIM2000-12 : \$119.00



**8" MANIFOLD 600V**  
**MED**

SKU: I-MFIM8  
\$65.00



**12" MANIFOLD FA2000**  
**10" MANIFOLD FA700**

I-INTADP-12- \$125.00  
I-INTADP-10- \$99.50



**SPLICE COLLAR**

Flex Duct Connector Splice Collar  
12" or 10"  
SKU: I-splice-collar  
**\$32.50**



**QUICK CLAMP 14" OR 12"**

Fits 2000 CFM Units-  
SKU: I-QCW14 / \$20.00  
Fits 600 CFM Units-  
SKU: I-QCW12 / \$20.00



**LAYFLAT DUCTING FITS**  
**6", 8", 10", & 12"**

SKU: I-20X500LAYFLAT  
\$149.00



**CLEAR MYLAR FLEX DUCT**

I-C1225HD- 12X25- 3 pieces / \$145  
I-C1025HD- 10X25- 4 pieces / \$135  
I-C825HD- 8X25- 5 pieces / \$150



**THERMAFLEX HEAVY**  
**DUTY DUCTING**

I-HD12DUCT- 12X25 / \$179.95  
I-HD10DUCT- 10X25 / \$149.00  
I-HD8DUCT- 8X25 / \$124.95



**12" HEAVY DUTY CLEAR**

SKU: I-HDFLEXCLEAR  
**\$236.00**



# MINTIE MOBILE CONTAINMENT & ACCESSORIES



## ECU4

Portable 3'x5' erected 7'x10.6' lightweight rip-stop poly fabric, flame-rated U.S. NFPA 701  
SKU: I-MTIECU4

\$3,695.00



## ECU4 BUNDLE W/OUT AIR SCRUBBER

ECU4, Mobile Platform, Tow Cart, Disposable Envelopes

SKU: I-ECU4BUNDLE

\$4,995.00



## ECU4 BUNDLE W/ AIR SCRUBBER

ECU4, Mobile Platform, Tow Cart, Disposable Envelopes, 600N Air Scrubber, Clamp

SKU: I-MTIECU4-MPPWA

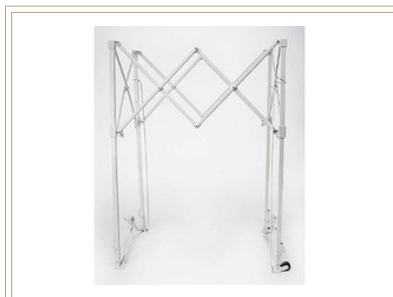
\$5,995.00



## TOW CART

SKU: I-ECU-MPTC

\$385.00



## REPLACEMENT FRAME

SKU: I-MTIECU4-FRC

\$2,150.00



## REPLACEMENT ENCLOSURE

SKU: I-MTIECU4E

\$1,495.00



## SIDEWALL ACCESS FLANGE

Used for Anteroom  
SKU: I-MTIECU4-SWF

\$895.00



## FLANGE CORRIDOR

Used for Anteroom

SKU: I-ECU2-CORFLA

\$1,395.00



## ECU4 W/ 2 ADDITIONAL ENVELOPES

SKU: I-ECU4-EXTP-3

\$5,895.00





# MOBILE ANTEROOM & CONTAINMENT CARTS



## HEPACART® MOBILE ANTEROOM

Heavy duty AnteRoom seals magnetically to the door frame.

- 51.75"W x 24"D x 85.5"T - 160 lbs.
- For room isolation, containment, and emergency preparedness
- All models include the heavy-duty, magnetically sealing aluminum HEPACART® AnteRoom module, floor levelers, three windows, flex-hose adaptor and shut off plates.

SKU: I-HCAR4818

**\$5,899.00**



## HEPACART® 55 & 74

Mobile ceiling access cart for containment & filtration

- Working Dimensions (55):  
Collapsed: 29"W X 55"L X 68"H
- Extended: Reaches up to 10'6"  
HEPA-Filtered Negative Air Machine
- Working Dimensions (74):  
Collapsed: 29" W x 74" L x 68" H
- Extended: Reaches up to 10'6"  
HEPA-Filtered Negative Air Machine
- Medical grade 99.99% at .03 microns MERV 18G  
Fan rated at 750 CFM
- Electrical
- 25ft. retractable ext. cord, outlets & lighting
- Versatile Raise/Lower Mechanism:
- Telescoping, spring-loaded extension poles  
Raises up to 14' with additional option tall enclosure & moves in 90 seconds or less with no tools.

SKU: I-HEPACART55

**\$9,995.00**



## SOLUTION 10

- Easy 3-Minute Setup
- HEPA Filtration System
- Available in 10'
- Fits in Doorways & Elevators
- Built-in Electrical Outlets
- Exterior Pocket Allows for the Visibility of ICRA Documentation
- Easy to Move & Operate

SKU: I-SOLUTION10

**\$10,454.40**



# CONTAINMENT ITEMS



## FIRE RETARDANT POLY

6 mil Anti-Static- 12'x100' Roll

SKU: I-W12ASFR

\$159.95



## FIRE RETARDANT POLY

6 mil Anti-Static- 20'x100' Roll

SKU: I-20X100

\$199.99



## CORRUGATED SURFACE SHIELD 25 Sheet Bundle

4x8 Fire Resistant-Plastic Sheeting

SKU: I-PLS4896W4 / \$1375.00



## RE-U-ZIP® MAGNETIC DUST BARRIER DOOR KIT

- 1 x Cut-to-Size, 12Mil Vinyl Barrier Panel
- 1 x Reusable Magnetic Entry Strip (80" Length)
- 1 x Fastener Strips (24' Hook & 24' Loop)
- 4 x Mounting Strip Re-Fill

SKU: I-MagDoorKit

\$125.00



## RE-U-ZIP® MAGNETIC DUST BARRIER ENTRY STRIP STARTER KIT

- 1x Magnetic Entry Strip (80" x 2.25")
- 4x Mounting Stips
- 1x Magnetic Entry Strip Carry Bag

SKU: I-MagStripKit

\$64.95



## RE-U-ZIP® MOUNTING STRIP RE-FILL

3 x RE-U-ZIP® Mounting Strip

SKU: I-Re-U-ZipMountingStrips

\$42.99



# ZIPWALL®



## ZIPWALL® KITS

12' Poles w/ 2 Standard Zippers, & carry bag ) 4-pack  
**I-SLP4- \$285**



## HEAVY-DUTY ZIPPERS

12 Pack-12 Zippers, 12 Flap Hooks, & 1 ZipperKnife Sheeting Cutter  
**I-HDAZ12- \$119.95**  
 2 Pack- 2 Zippers, 2 Flap Hooks, 1& ZipperKnife Sheeting Cutter  
**I-HDAZ2- \$25.95**



## ZIPWALL SPRING LOADED POLES

10' Poles (2-Pack)  
**I-ZP2- \$98.95**  
 12' Poles (2-Pack)  
**I-SLP2- \$160.99**  
 20' Poles (2-Pack)  
**I-KT20- \$279.99**  
 12' Poles (6-Pack)  
**I-SLP6- \$425**



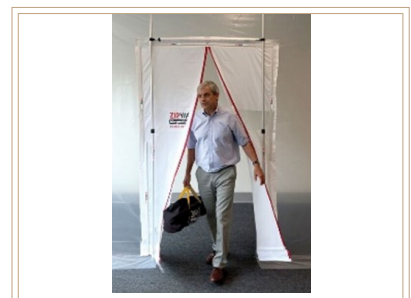
## ZIPWALL® FOAMRAIL™

Adjustable Seal extends from 4'3" to 8'  
**I-SPN- \$63.95**  
 Adjustable Seal extends from 2'3" to 4'  
**I-SPNM- \$39.95**  
 Seal (2-Pack) 4' Seals & 2 T-Clip  
**I-FR2- \$63.95**



## COMMERCIAL DOOR KIT

Flame Retardant Door up to 4' x 8'  
 1 Roll 1" x 24 Double-Sided Tape  
 SKU: ZDC  
**\$49.95**



## MAGNETIC DUST BARRIER DOOR KIT

Adjustable Door Panel & Parts  
 SKU:I-MDK  
**\$273.50**



## DUST BARRIER TOOLKIT

12' poles, 6 FoamRail Span™, 2 Tracks, 1 SideBridge™4 pack, 1-double-sided tape, 5 heads & plates, 5 GripDisk™, 2 floor adaptors, 2 heavy-duty zippers, 1 ZipDoor®, 2 Edge™ heads & plates, 1 ZipFast™  
**I-ZWTK- \$1595**

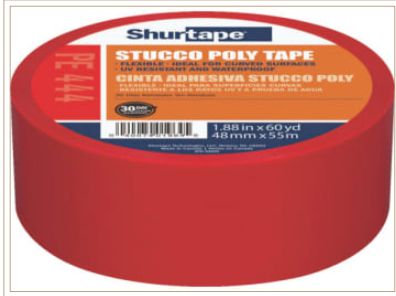


## SIDEPACK WALLMOUNT KIT

6 Side Clamp wall mounts  
 6 3' FoamRail™ Span  
 SKU: I-SDPK  
**\$235**



# CONTAINMENT ITEMS



## UV Resistant Tape

SKU: I-P444  
\$235.00 Per Case (24)



## Decker 3 " White Tape

SKU: I-DT42A  
\$225.00 Per Case (16)



## Blue Containment Tape

SKU: I-CP327  
\$235.00 Per Case (24)



## Double Sided Containment Tape

SKU: I-DS154  
\$295.00 Per Case (24)



## 2" Containment Tape

SKU: I-FRTAPE  
\$454.80 Per Case (24)  
\$18.95 Per Roll



## Carpet Shield

3 mil Anti-Static- 36"x500 Roll  
Self-Adhesive Protection Film  
SKU: I-CarpetPro  
\$175.00



## HVAC Grill Mask

SKU: I-GRILL MASK  
2 Per Case 12X200ft roll /\$59.95



## Poly Hangers 2

Hang Poly Directly to Wall  
Moldings of Acoustic Ceilings  
SKU: I-PH2  
Pack of 100 \$145.00



## Poly Hangers 3

Hang Poly Sheeting Directly from  
Drop Ceiling Grid  
SKU: I-PH3  
Pack of 100 \$275.00





# EDGE GUARD HARD WALL SYSTEMS

## ICRA Solutions - Edge Guard Price List

### Panel Sizes 7'-8" - 10' -0"

Part Number	Part Description	Opal/Semi-Clear		Clear	
		Price	You'll Pay	Price	You'll Pay
4000	4' Panel Assembly	\$ 640.00	\$ 608.00	\$ 680.00	\$ 646.00
4001	3' Panel Assembly	\$ 605.00	\$ 574.75	\$ 640.00	\$ 608.00
4002	2' Panel Assembly	\$ 475.00	\$ 451.25	\$ 500.00	\$ 475.00
4002.1	2' Panel Assemble with HEPA Filtered Air Discharge Port	\$ 550.00	\$ 522.50	\$ 570.00	\$ 541.50
4003	48" Panel w/44" Door- Lever Style Locket	\$ 1,095.00	\$ 1,040.25	\$ 1,160.00	\$ 1,102.00
4003PB	48" Panel w/44" Door- Pushbutton Combination Lockset	\$ 1,295.00	\$ 1,230.25	\$ 1,360.00	\$ 1,292.00
4004	Hinged Corner Assembly	\$ 200.00	\$ 190.00		
4005	6" Panel Assembly	\$ 290.00	\$ 275.50	\$ 305.00	\$ 289.75
4006	12" Panel Assembly	\$ 315.00	\$ 299.25	\$ 325.00	\$ 308.75
4007	Outside Corner Post	\$ 170.00	\$ 161.50		
4008	52" Panel w/48" Door- Lever Style Locket	\$ 1,320.00	\$ 1,254.00	\$ 1,380.00	\$ 1,311.00
4008PB	52" Panel w/48" Door- Pushbutton Combination Lockset	\$ 1,520.00	\$ 1,444.00	\$ 1,580.00	\$ 1,501.00
4009	T Post	\$ 170.00	\$ 161.50		
4010	36" Panel w/32" Door- Lever Style Lockset	\$ 995.00	\$ 945.25	\$ 1,015.00	\$ 964.25
4010PB	36" Panel w/32" Door- Pushbutton Combination Lockset	\$ 1,195.00	\$ 1,135.25	\$ 1,215.00	\$ 1,154.25
4012	Outside Hinged Corner	\$ 270.00	\$ 256.50		
7000	7' Wide Panel w/6' 8" Double Door Opening - Lever Style Lockset - 10' Tall	\$ 2,195.00	\$ 2,085.25	\$ 2,295.00	\$ 2,180.25
7001	92" Wide Sliding Door Panel (ships in 3 parts) 10' Tall	\$ 2,495.00	\$ 2,695.00	\$ 2,595.00	\$ 2,795.00
7002	60" Panel w/ 56" Door- Lever Style Locket	\$ 1,395.00	\$ 1,325.25	\$ 1,545.00	\$ 1,467.75
7002 PB	60" Panel w/ 56" Door- Pushbutton Combination Lockset	\$ 1,595.00	\$ 1,568.00	\$ 1,745.00	\$ 1,657.75

### Packages

Part Number	Part Description	Opal/Semi-Clear		Clear	
		Price	You'll Pay	Price	You'll Pay
6000	8' x 2' Anteroom Type Enclosure				
	Qty 1 - P/N 4000 - 4' Panel Assembly	\$ 640.00	\$ 608.00	\$ 680.00	\$ 646.00
	Qty 1 - P/N 4003- 48" Panel w/44" Door- Lever Style Locket	\$ 1,095.00	\$ 1,040.25	\$ 1,160.00	\$ 1,102.00
	Qty 1 - P/N 4002.1 - 2' Panel Assemble with HEPA Filtered Air Discharge Port	\$ 550.00	\$ 522.50	\$ 570.00	\$ 541.50
	Qty 1 - P/N 4002 - 2" Panel Assembly	\$ 475.00	\$ 451.25	\$ 500.00	\$ 475.00
	Qty 2 - P/N 4004 - Hinged Corner Assembly	\$ 400.00	\$ 380.00	\$ 400.00	\$ 380.00
	Qty 12 - P/N 3003 - Closure Strip	\$ 105.00	\$ 99.75	\$ 105.00	\$ 99.75
	Qty 1 - P/N 4011- Panel Transport Cart	\$ 305.00	\$ 289.75	\$ 305.00	\$ 289.75
	<b>Total</b>	<b>\$ 3,570.00</b>	<b>\$ 3,391.50</b>	<b>\$ 3,720.00</b>	<b>\$ 3,534.00</b>
6005	12' x 2' Anteroom Type Enclosure				
	Qty 2 - P/N 4000 - 4' Panel Assembly	\$ 1,280.00	\$ 1,216.00	\$ 1,240.00	\$ 1,178.00
	Qty 1 - P/N 4003- 48" Panel w/44" Door- Lever Style Locket	\$ 1,095.00	\$ 1,040.25	\$ 1,160.00	\$ 1,102.00
	Qty 1 - P/N 4002.1 - 2' Panel Assemble with HEPA Filtered Air Discharge Port	\$ 550.00	\$ 522.50	\$ 570.00	\$ 541.50
	Qty 1 - P/N 4002 - 2' Panel Assembly	\$ 475.00	\$ 451.25	\$ 500.00	\$ 475.00
	Qty 2 - P/N 4004 - Hinged Corner Assembly	\$ 400.00	\$ 380.00	\$ 400.00	\$ 380.00
	Qty 12 - P/N 3003 - Closure Strip	\$ 105.00	\$ 99.75	\$ 105.00	\$ 99.75
	Qty 1 - P/N 4011- Panel Transport Cart	\$ 305.00	\$ 289.75	\$ 305.00	\$ 289.75
	<b>Total</b>	<b>\$ 4,210.00</b>	<b>\$ 3,999.50</b>	<b>\$ 4,280.00</b>	<b>\$ 4,066.00</b>
6010	4' x 2' Anteroom Type Enclosure				
	Qty 1 - P/N 4003- 48" Panel w/44" Door- Lever Style Locket	\$ 1,095.00	\$ 1,040.25	\$ 1,160.00	\$ 1,102.00
	Qty 1 - P/N 4002.1 - 2' Panel Assemble with HEPA Filtered Air Discharge Port	\$ 550.00	\$ 522.50	\$ 570.00	\$ 541.50
	Qty 1 - P/N 4002 - 2' Panel Assembly	\$ 475.00	\$ 451.25	\$ 500.00	\$ 475.00
	Qty 2 - P/N 4004 - Hinged Corner Assembly	\$ 400.00	\$ 380.00	\$ 400.00	\$ 380.00
	Qty 12 - P/N 3003 - Closure Strip	\$ 105.00	\$ 99.75	\$ 105.00	\$ 99.75
	Qty 1 - P/N 4011- Panel Transport Cart	\$ 305.00	\$ 289.75	\$ 305.00	\$ 289.75
	<b>Total</b>	<b>\$ 2,930.00</b>	<b>\$ 2,783.50</b>	<b>\$ 3,040.00</b>	<b>\$ 2,888.00</b>
6015	3' x 2' Anteroom Type Enclosure				
	Qty 1 - P/N 4010 - 36" Panel w/32" Door- Lever Style Lockset	\$ 995.00	\$ 945.25	\$ 1,015.00	\$ 964.25
	Qty 1 - P/N 4002.1 - 2' Panel Assemble with HEPA Filtered Air Discharge Port	\$ 550.00	\$ 522.50	\$ 570.00	\$ 541.50
	Qty 1 - P/N 4002 - 2' Panel Assembly	\$ 475.00	\$ 451.25	\$ 500.00	\$ 475.00
	Qty 2 - P/N 4004 - Hinged Corner Assembly	\$ 400.00	\$ 380.00	\$ 400.00	\$ 380.00
	Qty 12 - P/N 3003 - Closure Strip	\$ 105.00	\$ 99.75	\$ 105.00	\$ 99.75
	Qty 1 - P/N 4011- Panel Transport Cart	\$ 305.00	\$ 289.75	\$ 305.00	\$ 289.75
	<b>Total</b>	<b>\$ 2,830.00</b>	<b>\$ 2,688.50</b>	<b>\$ 2,895.00</b>	<b>\$ 2,750.25</b>

[www.icrasolutions.com](http://www.icrasolutions.com)

[info@icrasolutions.com](mailto:info@icrasolutions.com)

678-412-5132

[www.icrasolutions.com](http://www.icrasolutions.com) | 678-412-5132 | [info@icrasolutions.com](mailto:info@icrasolutions.com)





# EDGE GUARD HARD WALLS

ICRA Solutions - Edge Guard Price List					
Panel Size 12' Tall					
Part Number	Part Description	Opal/Semi-Clear		Clear	
		Price	You'll Pay	Price	You'll Pay
4020	4' Panel Assembly	\$710.00	\$674.50	\$ 745.00	\$ 707.75
4021	3' Panel Assembly	\$660.00	\$627.00	\$ 695.00	\$ 660.25
4022	2' Panel Assembly	\$530.00	\$503.50	\$ 555.00	\$ 527.25
4022.1	2' Panel Assembly with HEPA Filtered Air Discharge Port	\$605.00	\$574.75	\$ 630.00	\$ 598.50
4023	48" Panel w/44" Door - Lever Style Lockset	\$1,200.00	\$1,140.00	\$1,240.00	\$1,178.00
4023PB	48" Panel w/44" Door - Pushbutton Combination Lockset	\$1,400.00	\$1,330.00	\$1,440.00	\$1,368.00
4024	Hinged Corner Assembly	\$225.00	\$213.75	\$ -	\$ -
4025	6" Panel Assembly	\$325.00	\$308.75	\$ 340.00	\$ 323.00
4026	12" Panel Assembly	\$350.00	\$332.50	\$ 370.00	\$ 351.50
4027	Outside Corner Post	\$190.00	\$180.50	\$ -	\$ -
4028	52" Panel w/48" Door - Lever Style Lockset	\$1,435.00	\$1,363.25	\$1,475.00	\$1,401.25
4028PB	52" Panel w/48" Door - Pushbutton Combination Lockset	\$1,635.00	\$1,553.25	\$1,675.00	\$1,591.25
4029	T Post	\$190.00	\$180.50	\$ -	\$ -
4030	36" Panel w/32" Door - Lever Style Lockset	\$1,095.00	\$1,040.25	\$1,135.00	\$1,078.25
4030PB	36" Panel w/32" Door - Pushbutton Combination Lockset	\$1,295.00	\$1,230.25	\$1,335.00	\$1,268.25
4032	Outside Hinged Corner 12' Tall	\$ 325.00	\$ 308.75	\$ -	\$ -
7020	7' Wide Panel w/6'8" Double Door Opening - Lever Style Lockset - 12' Tall	\$ 2,295.00	\$ 2,180.25	\$ 2,295.00	\$ 2,180.25
7021	92" Wide Sliding Door Panel (ship in 3 parts) 12' Tall	\$ 2,895.00	\$ 2,850.25	\$ 2,995.00	\$ 2,945.25
Panel Size 14' Tall					
Part Number	Part Description	Opal/Semi-Clear		Clear	
		Price	You'll Pay	Price	You'll Pay
4040	4' Panel Assembly	\$880.00	\$836.00	\$ 920.00	\$ 874.00
4041	3' Panel Assembly	\$825.00	\$783.75	\$ 860.00	\$ 817.00
4042	2' Panel Assembly	\$660.00	\$627.00	\$ 700.00	\$ 665.00
4042.1	2' Panel Assembly with HEPA Filtered Air Discharge Port	\$740.00	\$703.00	\$ 775.00	\$ 736.25
4043	48" Panel w/44" Door - Lever Style Lockset	\$1,440.00	\$1,368.00	\$1,495.00	\$1,420.25
4043PB	48" Panel w/44" Door - Pushbutton Combination Lockset	\$1,640.00	\$1,558.00	\$1,695.00	\$1,610.25
4044	Hinged Corner Assembly	\$270.00	\$256.50	\$ -	\$ -
4045	6" Panel Assembly	\$370.00	\$351.50	\$ 385.00	\$ 365.75
4046	12" Panel Assembly	\$430.00	\$408.50	\$ 450.00	\$ 427.50
4047	Outside Corner Post	\$245.00	\$232.75	\$ -	\$ -
4048	52" Panel w/48" Door - Lever Style Lockset	\$1,560.00	\$1,482.00	\$1,595.00	\$1,515.25
4048PB	52" Panel w/48" Door - Pushbutton Combination Lockset	\$1,760.00	\$1,672.00	\$1,795.00	\$1,705.25
4049	T Post	\$245.00	\$232.75	\$ -	\$ -
4050	36" Panel w/32" Door - Lever Style Lockset	\$1,340.00	\$1,273.00	\$1,375.00	\$1,306.25
4050PB	36" Panel w/32" Door - Pushbutton Combination Lockset	\$1,540.00	\$1,463.00	\$1,575.00	\$1,496.25
4052	Outside Hinged Corner - 14' Tall	\$270.00	\$256.50	\$ -	\$ -
7040	7' Wide Panel w/6'8" Double Door Opening - Lever Style Lockset - 14' Tall	\$2,445.00	\$2,322.75	\$2,495.00	\$2,370.25
7041	92" Wide Sliding Door Panel (ships in 3 parts) 14' Tall	\$3,395.00	\$3,325.25	\$3,495.00	\$3,420.25
Panel Extenders					
Part Number	Part Description	Opal/Semi-Clear			
		Price	You'll Pay		
4003 EX 9	9" Tall Extension Panel for Doors (specify width)	\$75.00	\$71.25		
4003 EX 18	18" Tall Extension Panel for Doors (specify width)	\$100.00	\$95.00		
4003 EX 24	24" Tall Extension Panel for Doors (specify width)	\$125.00	\$118.75		
Accessories					
3001	Grid Clip Assembly	\$ 7.45	\$ 7.08		
3002	Cam Lock Assembly	\$ 5.15	\$ 4.89		
3003	Closure Strip	\$ 8.00	\$ 7.60		
3004	Screw Jack Assembly	\$ 6.65	\$ 6.32		
3005	Digital Differential Pressure Gage Kit	\$ 285.00	\$ 271.25		
3005.1	Gauge Bracket Kit	\$ 25.00	\$ 23.75		
3006	Pushbutton Combination Lockset	\$ 200.00	\$ 190.00		
3007	Leverstyle Lockset	\$ 50.00	\$ 47.50		
3008	Hydraulic Door Closer	\$ 65.80	\$ 62.51		
3011	1 5/8" T-Nut & Knob (replacement for adjustable top)	\$ 2.00	\$ 1.90		
3012	Passage Lockset (does not lock)	\$ 50.00	\$ 47.50		
4003SB	Slice Bar for Extension Panels (price is per 2)	\$ 15.00	\$ 14.25		
4011	Panel Transport Cart	\$ 305.00	\$ 289.75		



[www.icrasolutions.com](http://www.icrasolutions.com)

[info@icrasolutions.com](mailto:info@icrasolutions.com)

678-412-5132





# PRESSURE MONITORS & PARTICLE COUNTERS



## OMNIGUARD 6 PRESSURE MONITOR

Built-in Cell Modem; Printer & Wall Hanger; USB Flash Drive  
SKU: I-10G6

**\$1895.00**



## EXTECH HD700 - DIFFERENTIAL PRESSURE MONITOR

±2psi range, 11 Selectable units of measure  
Max/Min/Avg recording and Relative time stamp  
SKU: I-EXHD700 \$295.00



## DWYER VAN-O-METER

Swing Vane Anemometer

SKU: I-480

**\$65.00**



## LP102F / LN102F

Visual POSITIVE OR NEGATIVE Passive Airflow Indicator w/ Fire Stop  
SKU: I-LP102F & I-LN102F

**\$921.15**



## LP102SF / LN102SF

Visual POSITIVE OR NEGATIVE Passive Airflow w/ Smoke Door  
SKU: I-LP102SF & I-LN102SF

**\$969.00**



## DUAL102F

Visual POSITIVE & NEGATIVE Dual Sided Passive Airflow Indicator w/ Fire Stop  
SKU: I-DUAL102F

**\$1,223.00**



## EXTECH HYGRO-THERMOMETER

Displays Humidity & Temperature  
Records Min/Max values

SKU: I-Hygro-Thermometer \$47.50



## REED LM 8000 MULTIFUNCTION METER

Measures air velocity, air temperature, ambient temperature, relative humidity, light & contact temperature

SKU: I-REEDLM \$195.00



## VPC300 VIDEO PARTICLE COUNTER WITH CAMERA

Measures up to 6 channels of particle sizes air temp. & Relative Humidity. Reports videos, photos & data points

SKU: I-EXPC \$1,945.00



# INDUSTRIAL HEPA VACUUMS & ACCESORIES

## FEIN TURBO II X AC HEPA WET/DRY VACUUM, AUTO CLEAN, 8.4 GALLON



- 1 HEPA filter
- 1 disposal bag
- 1 suction hose 13ft
- 1 tool coupling with suction control
- 1 step adapter
- 2 metal extension tubes
- 1 combination tool with interchangeable inserts, 1 crevice nozzle, 1 dusting brush, 1 elbow

SKU: I-TURBOXAC

**\$895.00**



**5 PACK OF VAC BAGS**

SKU: I-HEPAVACBAG1

**\$53.99**



**HEPA FILTER**

SKU: I-FEINHEPAFILTER

**\$149.00**

## NILFISK ATTIX 30 WET/DRY VACUUM, 8 GALLON



- 10'L x 1-1/2" Dia. hose
- chrome curved wand
- 2 pc. chrome extension wand
- floor nozzle-combination
- crevice nozzle
- brush nozzle
- universal nozzle
- washable filter
- aluminum extension tube.

SKU: I-107418445

**\$925.00**



**FLEECE FILTER BAGS**

SKU: I-107419591

**\$53.00**



**HEPA FILTER**

SKU: I-302001095

**\$169.00**

## NILFISK ATTIX 50 WET/DRY VACUUM, 12 GALLON



- 10'L x 1-1/2" Dia. hose
- Soft-start feature
- chrome curved wand
- 2 pc. chrome extension wand
- floor nozzle-combination
- crevice nozzle
- brush nozzle
- universal nozzle
- washable filter
- one paper bag

SKU: I-302004233

**\$1025.00**



**FLEECE FILTER BAGS**

SKU: I-107419592

**\$ 53.00**



**HEPA FILTER**

SKU: I-302001095

**\$ 169.00**



# PPE PERSONAL PROTECTIVE EQUIPMENT



### 3 PLY MASK

FDA Approved  
50 Mask/Case  
SKU: I-DFM

50/cs \$19.50



### KN95 MASKS

SKU: I-KN95

20/cs \$29.99



### FACE SHIELDS

Sold individually  
Sweatband & Shield  
SKU: I-FaceShield

\$14.95 each



### POWDER FREE NITRILE GLOVES M, L, XL

100 gloves/cs \$19.95



### POLYPROPYLENE CAP

21" White SKU:I-BCAP

21" Red SKU: I-RBouffantCap

100/cs \$23.95



### BEARD COVER

White Polypropylene  
SKU: I-BeardCover

100/cs \$19.99



### COVERALL HOOD

Elastic Wrist & Ankles w/ Hood  
No Boot

I-PIP3606/2XL

I-PIP3606/3XL

25/cs \$173.00



### COVERALL OPEN

White Zipper Front w/ Open Wrist  
& Ankle

I-PIP3600/2XL

I-PIP3600/3XL

25/cs \$173.00



### COVERALL ELASTIC

White Zipper Front w/ Elastic  
Wrist & Ankle

I-DP125SWH-2X

I-DP125SWH-3X

25/cs \$159.00



# PPE PERSONAL PROTECTIVE EQUIPMENT



## BLUE SHOE COVERS

*Fits up to size 18 work boot*

SKU: I-CSBSCB

50 Pairs/ cs \$35.99



## WHITE SHOE COVERS

*Fits up to size 18 work boot*

SKU: I-CSBSCW

50 Pairs/ cs \$35.99



## WATERPROOF BLUE SHOE COVERS

*Fits up to size 18 work boot*

SKU: I-CSBSCWPDB

50 Pairs/ cs \$35.99



## Automatic Bootie Dispenser

SKU: I-KBLG

\$595



## WATERPROOF NON-SKID DISPENSER SHOE COVERS

SKU: I-KBSB600

600 pairs \$355.95



## NON-SKID DISPENSER SHOE COVERS

SKU: I-KBNS28-750

750 pairs \$265.00



## WATERPROOF BLUE DISPENSER SHOE COVERS

SKU: I-KBHP630

630 pairs \$366.95



## RADNOR® SAFETY GLASSES

Clear Frame & Clear Polycarbonate Hard Coat Lens  
SKU: I-SafetyGlasses

12/ cs \$35.99



## SNEEZE GUARDS

Size's:

43x36 w/ 7x23 Opening

**I-SNG4336 : \$195.00**

29x30 w/ 6x14 Opening

**I-SG2930 : \$165.00**





# MISC ACCESORIES



## SHUT GUN

Shut off a sprinkler quickly

SKU: I-SG100

\$84.99



## WYPALL WIPERS

White cloth-like towels for cleaning up oil, water & grease

SKU: I-Towels

120/ cs \$19.00



## HUSKY CONTRACTOR TRASH BAGS

SKU: I-HeavyDTrashBags

50/cs \$39.99



## MAX AIR FOGGER

SKU: I-MAXFOG

\$595.00



## KEYBOARD COVERS

Pack of 100 Disposable Covers

SKU: I-KeyboardCovers

\$49.95



## FOSTER 40-80 FIRST DEFENSE DISINFECTANT

5 Gallon Pail: I-F40-80 \$90.00

(6) 32 oz Bottles: \$199.00

I-F40-80spraybottlecase

32 oz Bottle- \$14.99



## CUBIC YARD TILT TRUCK

Color options - Black or Gray

1.1 Cubic Yard- 99lbs

SKU: I-1.1TiltTruck \$669.00

1/2 Cubic Yard- 79lbs

SKU: I-1/2TiltTruck \$645.00



## TILT TRUCK LID

Color options - Black or Gray

1.1 Cubic Yard Lid-

SKU: I-Lid \$179.00

1/2 Cubic Yard Lid-

SKU: I-1/2Lid \$185.00



## TOOL PUSH CART

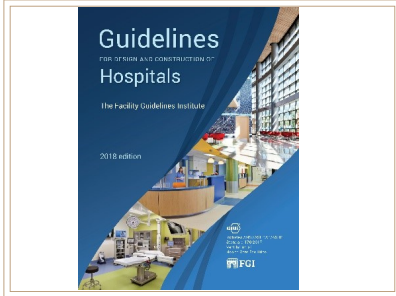
40x26 with 5" Casters

SKU: I-PushCart

\$295.00



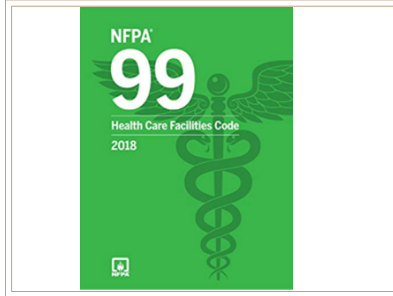
# HOSPITAL CONSTRUCTION RESOURCES & SIGNAGE



## FGI GUIDELINES

Guidelines for Design & Construction of Hospitals

\$275.00 SKU -FGI2018 , I-FGI2022



## NFPA 99

Health Care Facilities Code Book

\$195.00 SKU: I-NFPA99-2012  
\$195.00 SKU: I-NFPA99-2018  
\$199.95 SKU: I-NFPA99-2024



## NFPA 101

Life Safety Code

\$195.00 SKU: I-NFPA101-2012  
\$195.00 SKU: I-NFPA101-2018  
\$199.95 SKU: I-NFPA101-2024



## EXIT SIGN

Size: 14x10 Right or Left  
SKU: I-ExitWithRightArrow  
SKU: I-ExitWithLeftArrow  
\$19.95



## NOTICE OF CONSTRUCTION SIGN

Size: 14x10  
SKU: I-PleaseExcuse  
\$24.99



## NO TRESPASSING SIGN

Size: 14x10  
SKU: I-NoTrespassing  
\$24.99



## CLEAR PERMIT HOLDERS

Pack of 4  
SKU: I-AWSH  
\$29.50



# KITS



## FLOOD KIT

Items Included:

- 1 trash cart with lid
- 1-poly
- 4-Zipwall Poles
- 12- zippers
- 2-rolls white tape
- 1-caution tape
- 1-cs sticky mats
- 6-water activated flood bags
- 50-absorbent pads
- 50- pairs gloves
- 5-coveralls
- 1-cs masks
- 2-caution signs
- 50-waterproof shoe covers
- 2-buckets
- 1-squeegee mop
- 1-mop w/ extra mop head
- 1- leak diverter
- 1-shut gun

SKU: I-FloodKit

**\$2,495.00**

## SPILL KIT

Items Included:

- 1- 20 Gallon Drum with twist on lid
- 12- 15 x 19" Pads
- 3- 3" x 12' Sorbent Socks
- 2- 18 x 18" Pillows
- 1- pair Nitrile Gloves
- 1- Emergency Handbook
- 1- pair Goggles
- 3- Disposal Bags

SKU: I-SpillKit

**\$250.00**





# KITS

## Hallway Kit



## HALLWAY KIT

Kit Includes:

- Custom 60' Panel w/ 56"-wide door (Clear)
- 36" Panel (Clear)
- Closure Strip (Clear) to be used over/ under handrail areas

SKU: I-HALLWAYKIT

**\$2,150**

## Negative Pressure Patient Room Kit



## NEG PRESSURE PATIENT ROOM KIT

*For areas 900 Square Feet or less with your typical 8-9-foot ceiling.*

Kit Includes:

- OmniAire 600N Air Scrubber/Neg Air Machine w/ 99.99% HEPA Filtration
- OmniGuard 6 Pressure Monitor w/ Continuous Monitoring & Printer for Paper Readouts
- 10" Thermaflex Heavy Duty Ducting
- 10" Clamp

SKU: I-NegativePressureKit

**\$3250.00**



# ICRA WORKSHOPS 2026

## ICRA I

January 9	August 10
February 13	August 28
February 27	September 14
March 13	September 28
March 30	October 16
April 13	October 30
April 30	November 9
May 11	November 30
May 29	December 14
June 29	
July 13	
July 31	

## FMC

Facilities,  
Maintenance,  
Contractor  
2-Day In-Person  
March 23-24  
June 8-9  
October 5-6

# ADVANCED CONSTRUCTION IN HEALTHCARE WORKSHOPS

## CHC RESOURCE REVIEW

February 16  
September 15

## CHFM RESOURCE REVIEW

June 22

*Register for ICRA Workshops at*  
[www.icrasolutions.com/icra-solutions-trainings-and-workshops/](http://www.icrasolutions.com/icra-solutions-trainings-and-workshops/)



Visit our website at  
**WWW.ICRASOLUTIONS.COM/SHOP**  
to order your  
**Infection Control Equipment!**



Need ICRA TRAINING for your next  
Healthcare Construction Project?  
Check out our ICRA Certification Workshops.

**678-412-5132**  
**2390 Satellite Blvd. Ste B,**  
**Buford, GA 30518**

